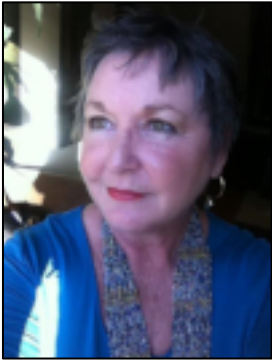


October 30, 2017 Meet Up Conference Call

“Creating a Welcoming Environment”

Hosted by Shelly Sender and Heidi Kutchin



Heidi Kutchin is currently the Pedagogy Specialist at Temple Emanu-El where she ensures pedagogy alignment (Reggio inspired) throughout the school and develops and supports teacher documentation. Heidi mentors educators in curriculum and environment. She has developed and organized multiple workshops and conferences. Heidi attended the International Study Group in Italy in 2017. Heidi has a Bachelor's Degree in business from the University of Texas at Austin. She resides in Dallas with her husband Josh, and two sons.



Shelly Sender has been the Early Childhood Education Director of Temple Emanu-El, Dallas for the past 11 years, and in the early childhood field for 34 years. She has a Master's Degree in early childhood disorders and education administration. Shelly has conducted workshops in classroom environments and has a passion for creating beautiful spaces for children. Shelly has been to the city of Reggio Emilia to explore the Reggio philosophy. Shelly has been married for 34 years and has 3 children, two sons and a daughter.

[Oct. 30, 2017 Meet Up Resources – “Creating a Welcoming Environment” PowerPoint Presentation](#)